

# SHURE®

LEGENDARY  
PERFORMANCE™

Wired Microphones  
Models BETA 53™ and BETA 54™

## Headworn Vocal Microphones

Microphones serre-tête pour la voix

Kopfbügel-Gesangsmikrofone

Micrófonos vocales con diadema

Microfoni con supporto attorno alla testa per voce

Головные вокальные микрофоны

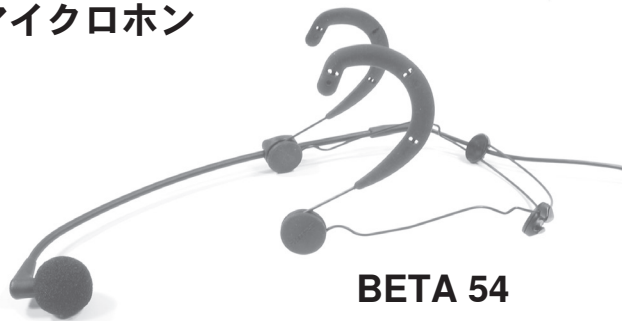
ボーカル用ヘッドウォーンマイクロホン

헤드원 보컬 마이크

多个头戴式人声话筒



**BETA 53**



**BETA 54**

©2010 Shure Incorporated  
27A14144 (Rev. 2)  
Printed in U.S.A.



CE

## Introduction

Shure models BETA 53 and BETA 54 are subminiature, electret condenser headworn microphones. They provide uncompromised sound quality and reliability with minimal visibility in applications such as broadcast, theater, and touring. Despite their small size, each microphone's condenser element delivers full, clear, and natural reproduction of speech and vocals. The microphone features a durable, low-profile wire frame headband which is fully adjustable for stability and comfort. A plastic carrying case protects the microphone and its accessories.

### **BETA 53 Features**

- Omnidirectional polar pattern for minimal handling noise and flexible microphone placement
- Extended, flat frequency response provides accurate speech and vocal reproduction
- Two interchangeable protective caps for response shaping
- Foam windscreens minimize breath noise and "popping"
- Available with an in-line preamp or with a TA4F connector for wireless applications
- Choice of black or tan finish to suit your performance environment

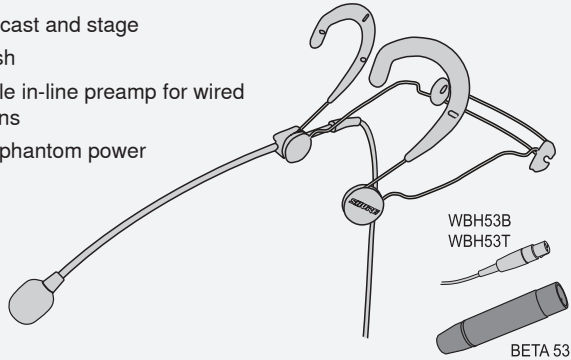
### **BETA 54 Features**

- Supercardioid polar pattern provides maximum gain-before-feedback and ambient rejection
- Extended frequency response tailored for vocal performances
- Able to handle extremely high sound pressure levels (SPL)
- Snap-fit foam windscreens stay in place during intensive movement
- Available with an in-line preamp or with a TA4F connector for wireless applications
- Choice of black or tan finish to suit your performance environment

## Available Models

### Beta 53 Models

- Omnidirectional
- For broadcast and stage
- Black finish
- Detachable in-line preamp for wired applications
- Requires phantom power



#### Wireless Models

These models are for use with Shure wireless microphone systems. TA4F connector attaches to wireless bodypacks (in-line preamp not included).

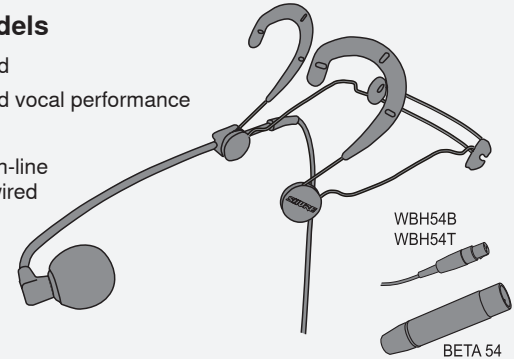
- WBH53B (black)
- WBH53T (tan)

#### Accessories

All models include: microphone and headband (1 each), foam windscreens (2), standard protective cap (2), filtered protective cap (2), swiveling lapel clip (1), boom holder (2), logo pad (1) and plastic carrying case (1).

### Beta 54 Models

- Supercardioid
- For stage and vocal performance
- Black finish
- Detachable in-line preamp for wired applications
- Requires phantom power



#### Wireless Models

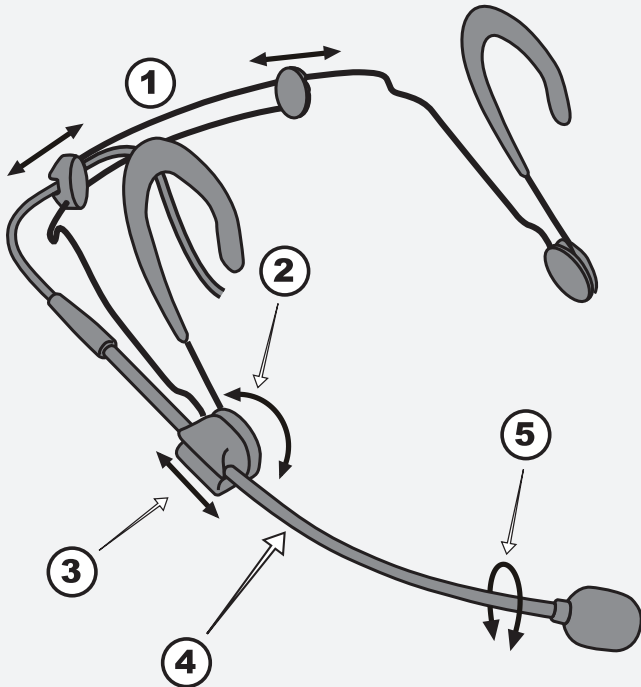
These models are for use with Shure wireless microphone systems. TA4F connector attaches to wireless bodypacks (in-line preamp not included).

- WBH54B (black)
- WBH54T (tan)

#### Accessories

All models include: microphone and headband (1 each), snap-fit foam windscreens (2), standard protective cap (2), swiveling lapel clip (1), boom holder (2), logo pad (1) and plastic carrying case (1).

## Adjusting the Headband and Microphone



①	Adjust headband width
②	Adjust boom height
③	Adjust boom length
④	<b>Do not attempt to bend the microphone boom!</b>
⑤	"Roll" the boom for subtle adjustments of microphone position

## Using the Windscreens and Protective Caps

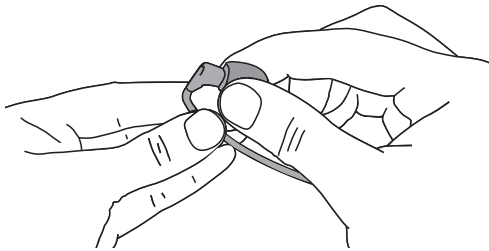
### Care and Maintenance

- Foam windscreens may be cleaned with soap and water.
- For the best sound quality, replace damaged or clogged protective caps and windscreens.

### Windscreen

Grip the internal frame of the windscreen firmly when connecting or removing. **Do not pull on the foam itself.**

- To connect, push the windscreen until it snaps into place over the cartridge.
- To remove, pull the windscreen directly off of the cartridge.



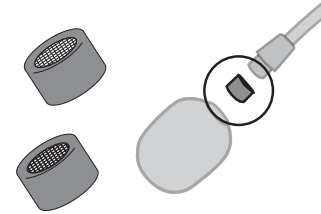
### Protective Caps

Standard protective cap:

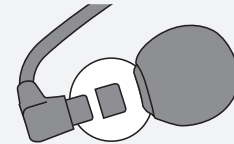
- Gold mesh
- No attenuation

Filtered protective cap:

- Silver mesh
- Attenuates high frequencies



**Important:** Always use the BETA 54 with the standard protective cap only. Using the microphone with no cap, or with the filtered cap, will degrade sound quality and alter the microphone's polar pattern.



## Positioning the Microphone



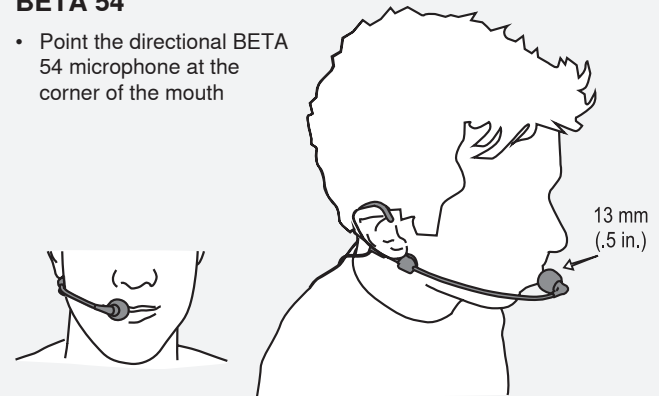
### BETA 53

- Position the omnidirectional BETA 53 microphone near the corner of the mouth
- If necessary, roll the boom to avoid contact with skin and facial hair



### BETA 54

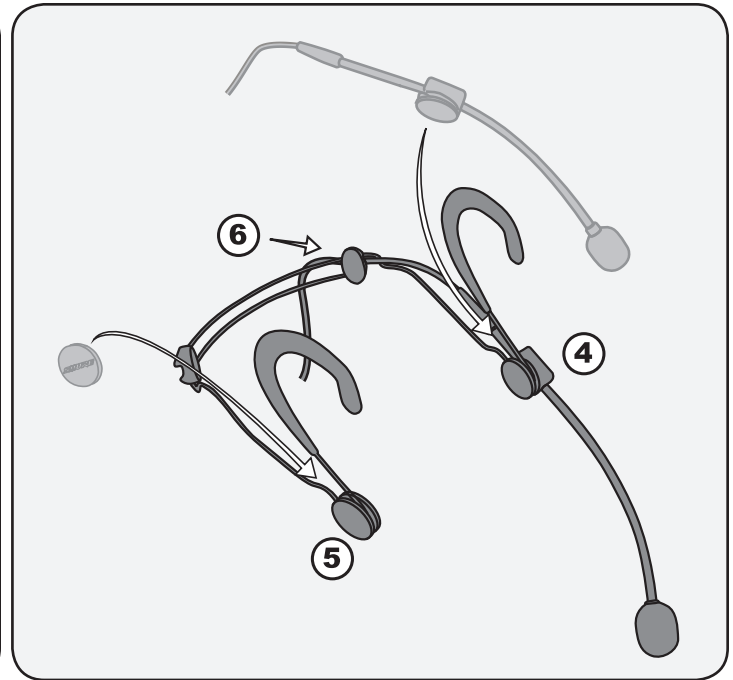
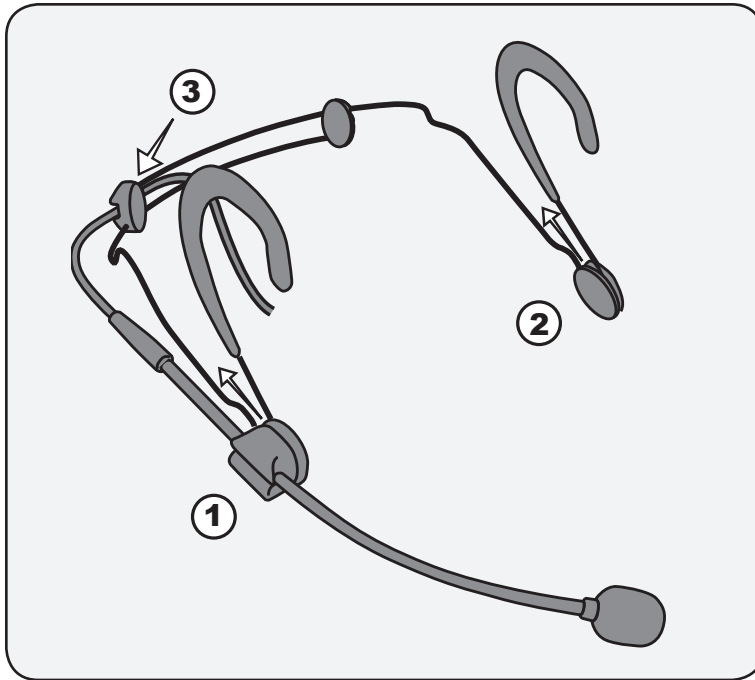
- Point the directional BETA 54 microphone at the corner of the mouth



## Wearing the Microphone on Either Side

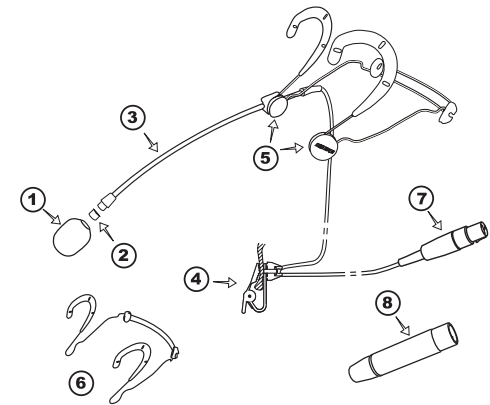
The microphone boom may be reinstalled to position it on the left or right side of the head.

- Carefully detach the boom holder ①, logo pad ②, and microphone cable ③ from the headband.
- Reattach the boom holder to the opposite side of the wire frame ④.
- Reattach the logo pad ⑤ and microphone cable ⑥.



## BETA 53 Replacement Parts and Accessories

	Component	Black	Tan
①	Foam Windscreen (5 pieces)	RPM304	RPM306
②	Standard Protective Cap (gold mesh) (5 pieces)	RPM208	RPM212
	Filtered Protective Cap* (silver mesh) (5 pieces)	RPM220	RPM214
③	Microphone/Boom Assembly with TA4F Connector (1 piece)	RPM132	RPM134
④	Swiveling Lapel Clip (5 pieces)	RPM510	RPM512
⑤	Boom Holder and Logo Pad (2 each)	RPM570	RPM580
⑥	Headband (1 piece, with boom holder and logo pad)	RPM550	RPM560
⑦	4-Pin Mini Connector (TA4F) (1 piece)	WA331**	
⑧	In-Line Preamp (1 piece)	RPM626**	

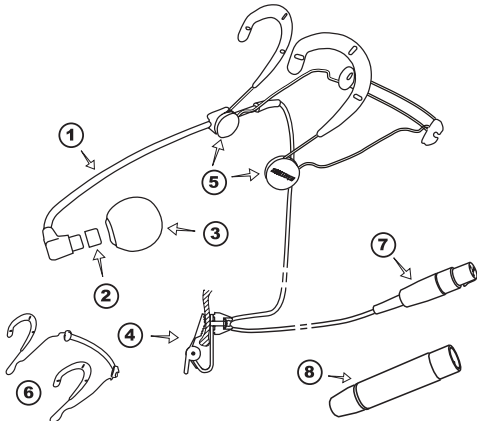


\*See the frequency response curve on page 74

\*\*Available in black only



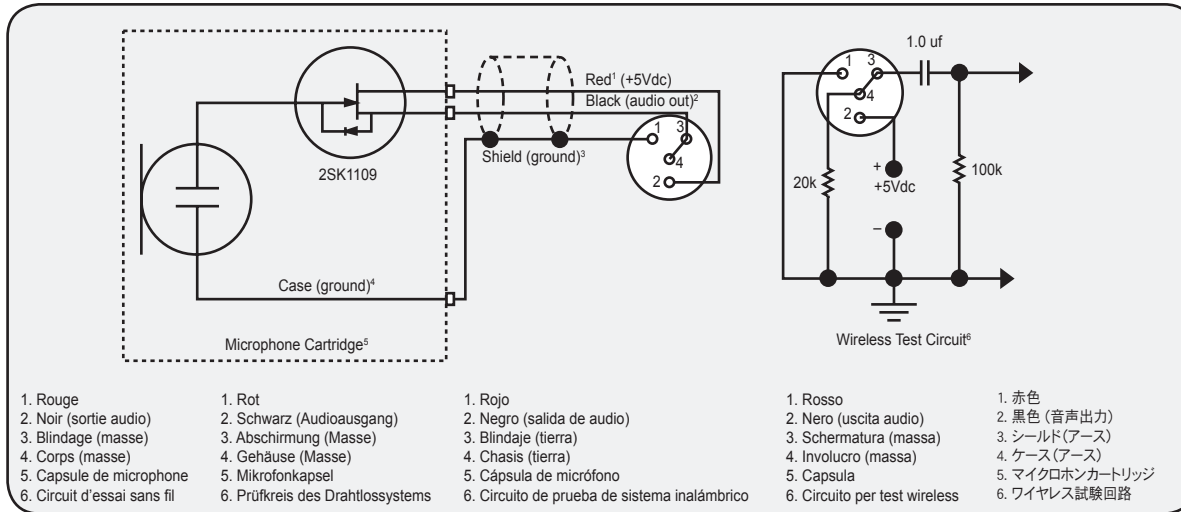
## BETA 54 Replacement Parts and Accessories



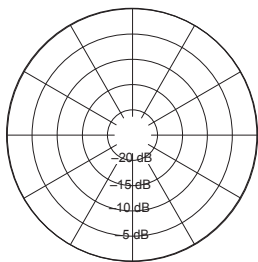
	Component	Black	Tan
①	Microphone/Boom Assembly with TA4F Connector (1 piece)	RPM646	RPM648
②	Standard Protective Cap (gold mesh) (5 pieces)	RPM208	RPM212
③	Snap-fit Foam Windscreen (4 pieces)	RPM316	RPM318
④	Swiveling Lapel Clip (5 pieces)	RPM510	RPM512
⑤	Boom Holder and Logo Pad (2 each)	RPM570	RPM580
⑥	Headband (1 piece, with boom holder and logo pad)	RPM550	RPM560
⑦	4-Pin Mini Connector (TA4F) (1 piece)	WA331*	
⑧	In-Line Preamp (1 piece)	RPM626*	

\*Available in black only

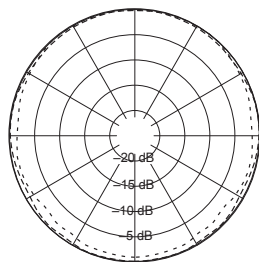
# Wiring Diagram



## BETA 53

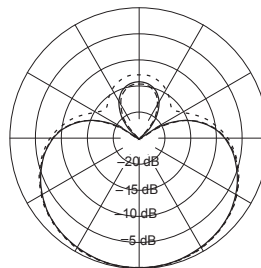


----- 250 Hz  
 - - - - - 500 Hz  
 \_\_\_\_\_ 1000 Hz

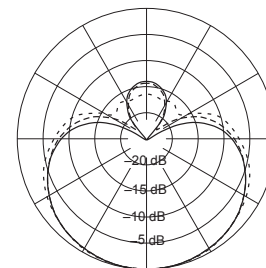


\_\_\_\_\_ 2.5 kHz  
 - - - - - 6.3 kHz  
 - - - - - 10 kHz

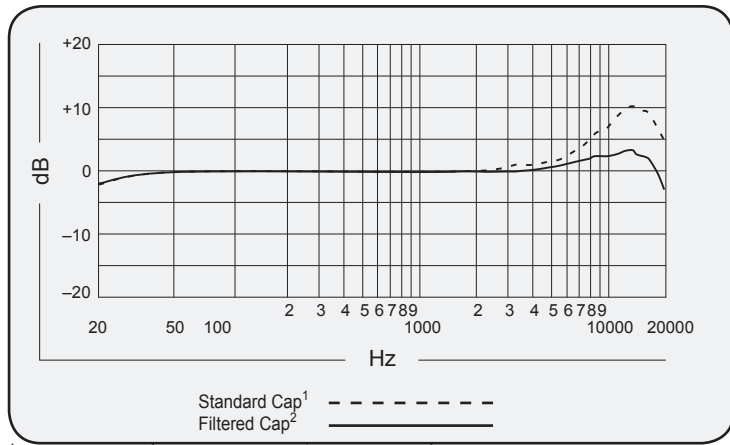
## BETA 54



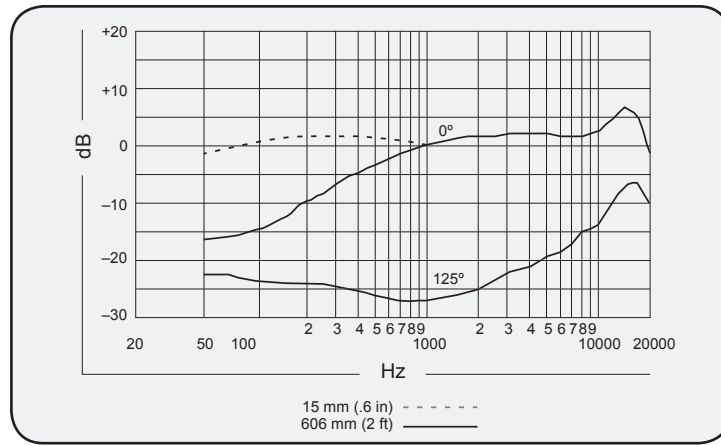
----- 250 Hz  
 - - - - - 500 Hz  
 \_\_\_\_\_ 1000 Hz



\_\_\_\_\_ 2.5 kHz  
 - - - - - 6.3 kHz  
 - - - - - 10 kHz



Standard Cap<sup>1</sup> - - - - -  
 Filtered Cap<sup>2</sup> \_\_\_\_\_



15 mm (.6 in) - - - - -  
 606 mm (2 ft) \_\_\_\_\_

<sup>1</sup> Capuchon standard  
<sup>2</sup> Capuchon à filtre

<sup>1</sup> Standardmäßige Kappe  
<sup>2</sup> Gefilterte Kappe

<sup>1</sup> Tapa estándar  
<sup>2</sup> Tapa con filtro

<sup>1</sup> Cappuccio standard 標準キャップ<sup>1</sup>  
<sup>2</sup> Cappuccio dotato di filtro フィルタ付きキャップ<sup>2</sup>

## CERTIFICATION

Eligible to bear CE Marking. Conforms to European EMC Directive 2004/108/EC. Meets Harmonized Standards EN55103-1:1996 and EN55103-2:1996, for residential (E1) and light industrial (E2) environments.

The Declaration of Conformity can be obtained from:

Authorized European representative:  
Shure Europe GmbH  
Headquarters Europe, Middle East & Africa  
Department: EMEA Approval  
Wannenacker Str. 28  
D-74078 Heilbronn, Germany  
Phone: +49 7131 72 14 0  
Fax: +49 7131 72 14 14  
Email: EMEAsupport@shure.de

## HOMOLOGATION

Autorisé à porter la marque CE. Conforme à la directive européenne CEM 2004/108/CE. Conforme aux normes harmonisées EN55103-1:1996 et EN55103-2:1996 pour les environnements résidentiels (E1) et d'industrie légère (E2).

La déclaration de conformité peut être obtenue de l'adresse suivante:

Représentant agréé européen :  
Shure Europe GmbH  
Siège Europe, Moyen-Orient et Afrique  
Homologation EMEA  
Wannenacker Str. 28  
D-74078 Heilbronn, Germany  
Phone: +49 7131 72 14 0  
Fax: +49 7131 72 14 14  
Email: EMEAsupport@shure.de

## CERTIFICACIONES

Califica para llevar la marca CE. Cumple con la directiva europea de EMC 2004/108/EC. Satisface las normas armonizadas EN55103-1:1996 y EN55103-2:1996 para entornos de uso residencial (E1) e industrial ligero (E2).

La declaración de conformidad se puede obtener de la siguiente dirección:

Representante autorizado en Europa:  
Shure Europe GmbH  
Casa matriz para Europa, Medio Oriente y Africa  
Aprobación para región de EMEA  
Wannenacker Str. 28  
D-74078 Heilbronn, Germany  
Phone: +49 7131 72 14 0  
Fax: +49 7131 72 14 14  
Email: EMEAsupport@shure.de

## ZERTIFIZIERUNG

Zur CE-Kennzeichnung berechtigt. Entspricht der europäischen Richtlinie zur elektromagnetischen Verträglichkeit 2004/108/EG. Entspricht den Anforderungen der harmonisierten Normen EN55103-1:1996 und EN55103-2:1996 für Wohngebiete (E1) und Leichtindustriegebiete (E2).

Die Konformitätserklärung ist über die unten stehende Adresse erhältlich:

Bevollmächtigter Vertreter in Europa:  
Shure Europe GmbH  
Headquarters Europe, Middle East & Africa  
Abteilung: EMEA-Zulassung  
Wannenacker Str. 28  
D-74078 Heilbronn, Germany  
Tel: +49 7131 72 14 0  
Fax: +49 7131 72 14 14  
Email: EMEAsupport@shure.de

## OMOLOGAZIONI

Contrassegnabile con il marchio CE. Conforme alla direttiva europea sulla compatibilità elettromagnetica 2004/108/CE. Conforme alle norme armonizzate EN55103-1:1996 ed EN55103-2:1996 per l'uso in ambienti domestici (E1) e industriali leggeri (E2).

La dichiarazione di conformità può essere ottenuta da:

Rappresentante europeo autorizzato:  
Shure Europe GmbH  
Sede per Europa, Medio Oriente e Africa  
Approvazione EMEA  
Wannenacker Str. 28  
D-74078 Heilbronn, Germany  
Phone: +49 7131 72 14 0  
Fax: +49 7131 72 14 14  
Email: EMEAsupport@shure.de

## СЕРТИФИКАЦИЯ

Соответствует требованиям для нанесения маркировки CE. Соответствует требованиям европейской директивы 2004/108/ЕЕС по ЭМС. Соответствует требованиям гармонизированных стандартов EN55103-1:1996 и EN55103-2:1996 для жилых районов (E1) и районов с легкими промышленными условиями (E2).

Заявление о соответствии можно получить по следующему адресу:

Уполномоченный европейский представитель:  
Shure Europe GmbH  
Headquarters Europe, Middle East & Africa  
Department: EMEA Approval  
Wannenacker Str. 28  
D-74078 Heilbronn, Germany (Германия)  
Телефон: +49 7131 72 14 0  
Факс: +49 7131 72 14 14  
Эл. почта: EMEAsupport@shure.de

## 認 証

CEマーキングに適合。欧州EMC指令2004/108/ECに適合。住宅(E1)および軽工業(E2)環境に関し、EN55103-1:1996およびEN55103-2:1996の整合規格に対応。

適合宣言書は以下より入手可能です:

ヨーロッパ認定代理店:  
Shure Europe GmbH  
ヨーロッパ、中東、アフリカ地区本部:  
部門: EMEA承認  
Wannenacker Str. 28  
D-74078 Heilbronn, Germany  
Phone: +49 7131 72 14 0  
Fax: +49 7131 72 14 14  
Eメール: EMEAsupport@shure.de

## 인 증

CE 마크를 사용할 자격이 있습니다. European EMC Directive 2004/108/EC를 준수합니다. 가정용 (E1) 및 경공업용 (E2) 통일 규격 (Harmonized Standards) EN55103-1:1996 및 EN55103-2:1996 요건들을 준수합니다.

적합성 선언서를 구하실 수 있는 곳:

공인 유럽 대리점:  
Shure Europe GmbH  
유럽, 중동, 아프리카 본부  
부서: EMEA(유럽중동) 승인  
Wannenacker Str. 28  
D-74078 Heilbronn, Germany  
전화: +49 7131 72 14 0  
팩스: +49 7131 72 14 14  
이메일: EMEAsupport@shure.de

## 认 证

允许使用 CE 标志。符合欧盟 EMC 法规 2004/108/EC。符合 Harmonized 标准 EN55103-1 : 1996 和 EN55103-2 : 1996 适用于民用 (E1) 和 轻工业 (E2) 环境。

可从以下地址获得“符合性声明”:

欧洲授权代表:  
Shure Europe GmbH  
Headquarters Europe, Middle East & Africa  
Department: EMEA Approval  
Wannenacker Str. 28  
D-74078 Heilbronn, Germany  
电话: +49 7131 72 14 0  
传真: +49 7131 72 14 14  
电子邮件: EMEAsupport@shure.de



**Patent Notice:** Patent Des. 451,902

**SHURE®**

**United States, Canada, Latin  
America, Caribbean:**  
Shure Incorporated  
5800 West Touhy Avenue  
Niles, IL 60714-4608 USA

Phone: 847-600-2000  
Fax: 847-600-1212 (USA)  
Fax: 847-600-6446  
Email: [info@shure.com](mailto:info@shure.com)

[www.shure.com](http://www.shure.com)

©2010 Shure Incorporated

**Europe, Middle East, Africa:**  
Shure Europe GmbH  
Wannenäckestr. 28,  
74078 Heilbronn, Germany

Phone: 49-7131-72140  
Fax: 49-7131-721414  
Email: [info@shure.de](mailto:info@shure.de)

**Asia, Pacific:**  
Shure Asia Limited  
22/F, 625 King's Road  
North Point, Island East  
Hong Kong  
Phone: 852-2893-4290  
Fax: 852-2893-4055  
Email: [info@shure.com.hk](mailto:info@shure.com.hk)